

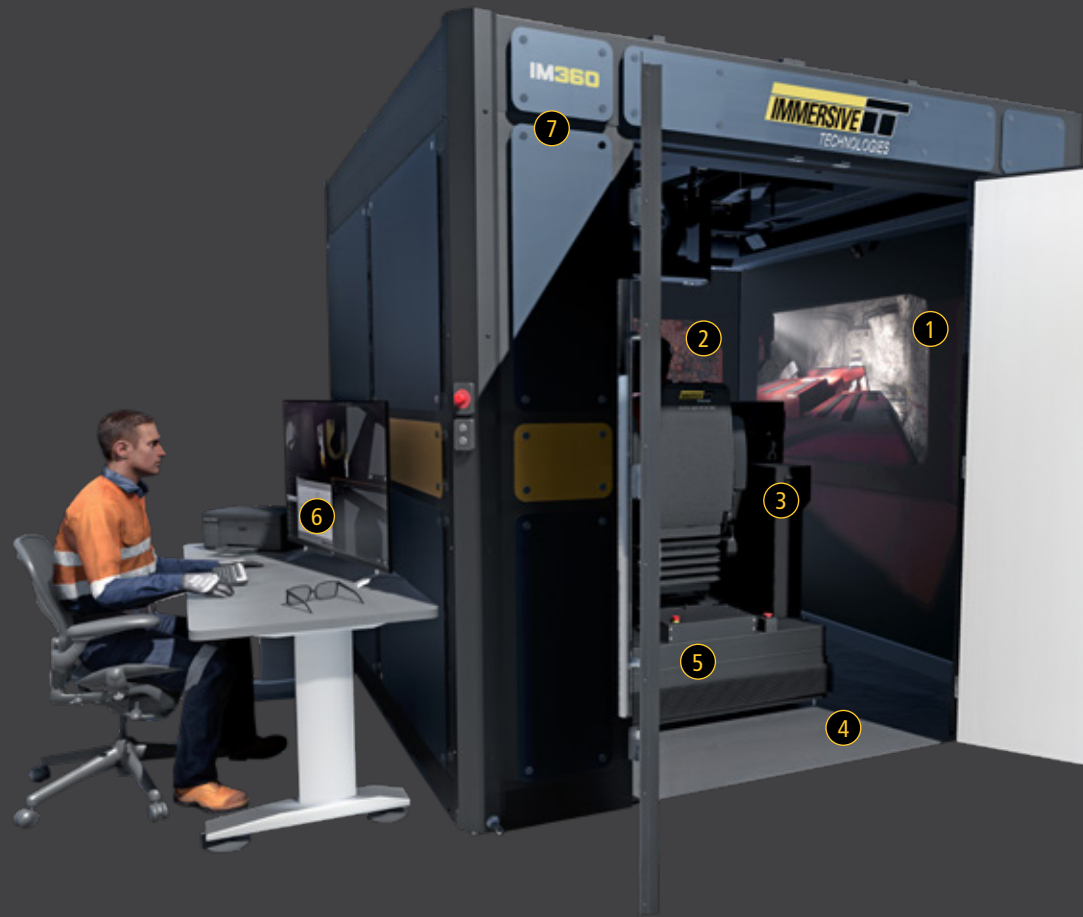
IM360

High-fidelity Equipment Simulator Platform for Underground and Surface Mining.

The IM360 has been designed for both underground mining and surface mining supporting all of Immersive's simulator modules. This platform offers a combination of configurability and simulation realism.



TRANSPORTABLE



1 360° VISUAL EXPERIENCE
360° display within an enclosed space replicates conditions in underground operations.

2 REALVIEW™ EXPERIENCE
Provides a dynamic view of the training environment and improved depth perception.

3 CONVERSION KIT® COMPATIBLE*
The IM360 is compatible with all Immersive Technologies' interchangeable Conversion Kits for surface and underground mining equipment.

4 TRAINER DECK
Safe standing area immediately next to the motion platform, allowing a trainer to provide necessary training direction and feedback.

* Conversion Kits sold separately. Trainer station chair not included.

** SimMentor™ is an optional add-on.



Haul Trucks



Excavators



Shovels



Rope Shovels



Track Dozers



Wheel Loaders



Graders



Draglines



Surface Drills



Light Trucks



Broadest OEM Range

Supported by leading Original Equipment Manufacturers which have thoroughly evaluated simulator suppliers and chosen to align with Immersive due to the company's global industry acceptance, technological leadership and proven customer success. We have developed solutions for: CATERPILLAR, HITACHI, KOMATSU, LIEBHERR, SANDVIK, EPIROC (ATLAS COPCO), VOLVO and many more.



Largest Simulator Deployment

Immersive Technologies have the largest deployment of simulation based training solutions in mining operations, contractors, dealers and training schools around the world with more than 1460+ simulator modules deployed in 51+ countries. 360+ Global mining customers have achieved operational improvement via the adoption of our solutions.

CLASSROOM



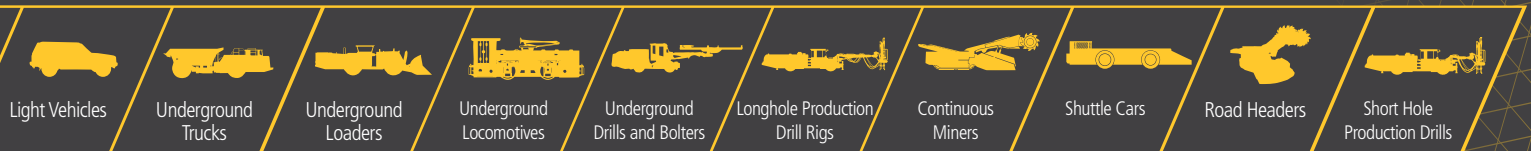
5 MOTION PLATFORM
Low profile, accurate motion platform optimized for mining and designed for easy Conversion Kit changeover.

6 ENHANCED TRAINER STATION*
Interface allows effective monitoring, reporting and control of simulation training sessions.

7 AIRFLOW SYSTEM
Positive pressure airflow system prevents dust from entering the container.

8 SIMMENTOR™**
Touch screen enables the full suite of Digital Learning products from within the simulator, without the need for additional office space. Ideal for Pre-Start Inspection training and brief/debrief sessions.

INTERCHANGEABLE MACHINE GROUPS SUPPORTED



Complete Solution Compatibility

Immersive Technologies' simulators are supported by the industry's most comprehensive range of compatible tools, technologies and professional services. This ensures a solution to meet or exceed your needs can be defined, delivered, implemented and generating operational results within a set time frame.

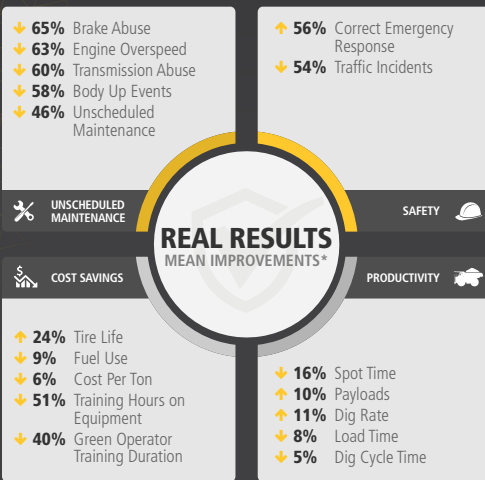


SimControl Software

SimControl is the software at the heart of our simulators. It delivers highly accurate simulation, advanced training capability and configuration functionality proven to significantly change operator behavior in the field. Get the most out of your simulator purchase with the latest version of SimControl.

Proven Customer Results

Immersive Technologies is the only equipment simulator supplier with a consistent and proven track record of delivering significant and measurable cost reductions, productivity gains and safety improvements.

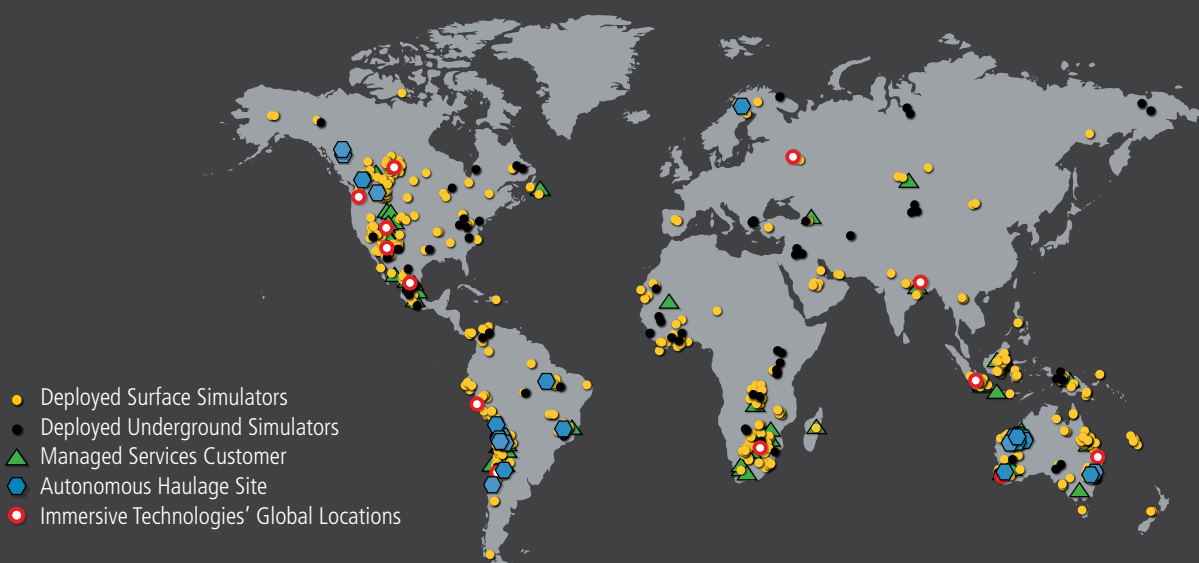


* All results are average in-field improvements, documented and verified by external parties.

Reliability & Technical Support

We provide unmatched support by:

- Locating specialists in or close to major mining hubs
- Offering a full range of technical support options both on and off site
- Our trained specialists keep your program up and running 24/7/365
- Delivering scheduled system upgrades and extended parts warranty
- Implementing site data analysis and training needs analysis
- Administering emergency on-site service



www.ImmersiveTechnologies.com

© Immersive Technologies
20241111

EXPECT RESULTS